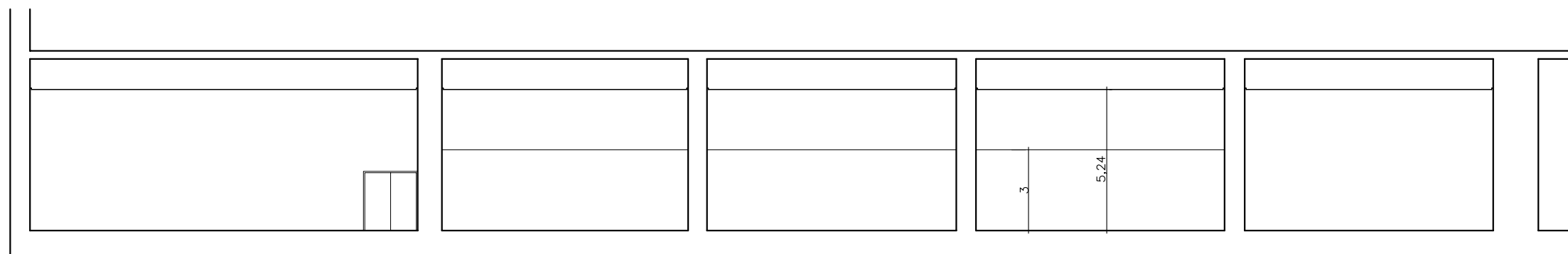
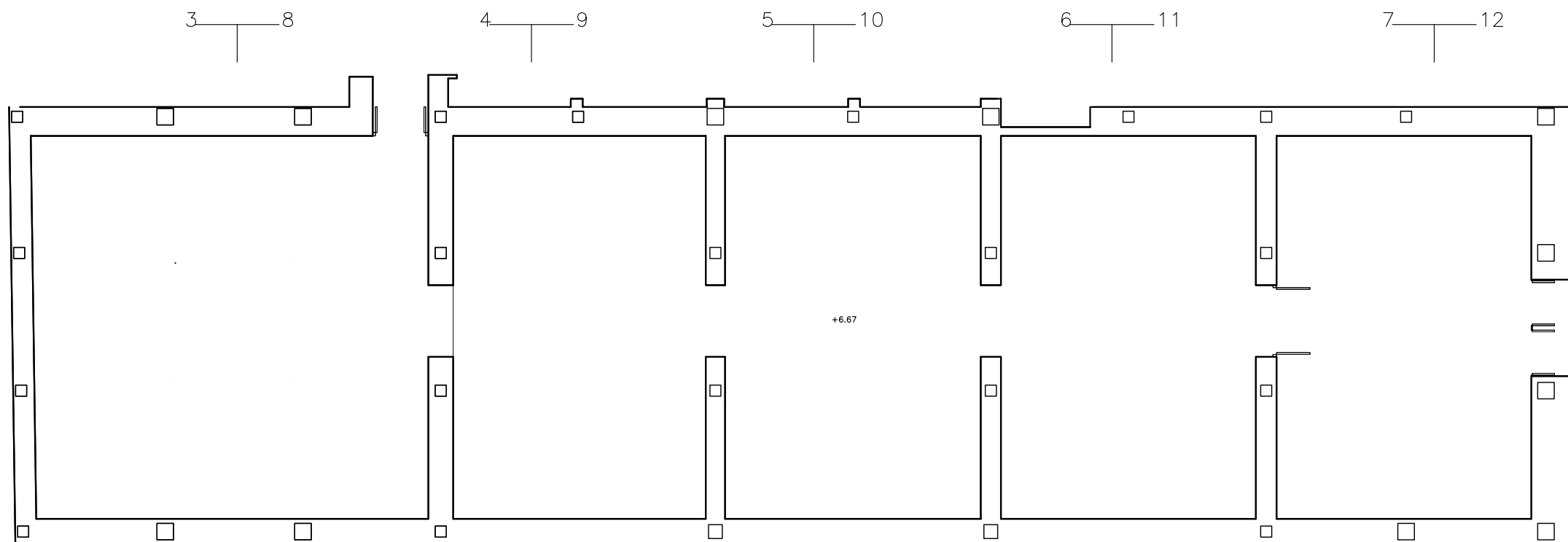


Superficie util : 720,80 m<sup>2</sup>



SECCION 1-1



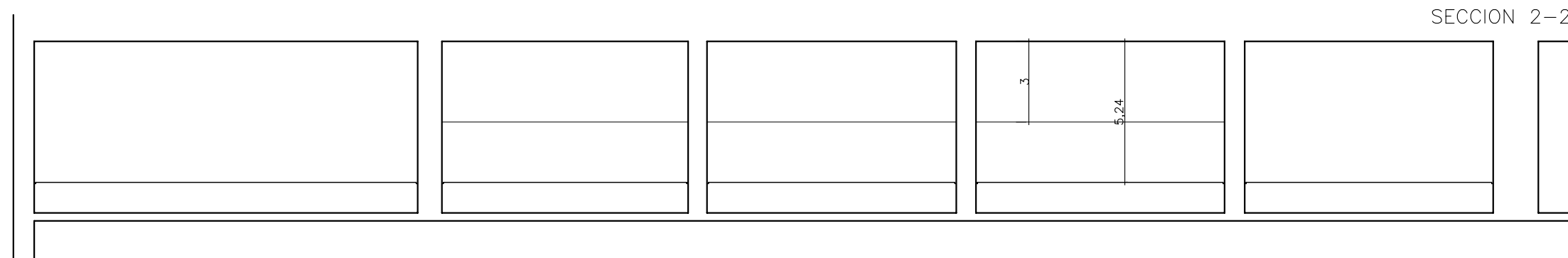
3-8 4-9 5-10 6-11 7-12

1  
2

1  
2

+6.67

3-8 4-9 5-10 6-11 7-12



SECCION 2-2



**GALERIA 4**  
PLANTA Y SECCIONES LONGITUDINALES  
E: 1/200